

Thamesmead Landscape Led Regeneration

PlaceShapers

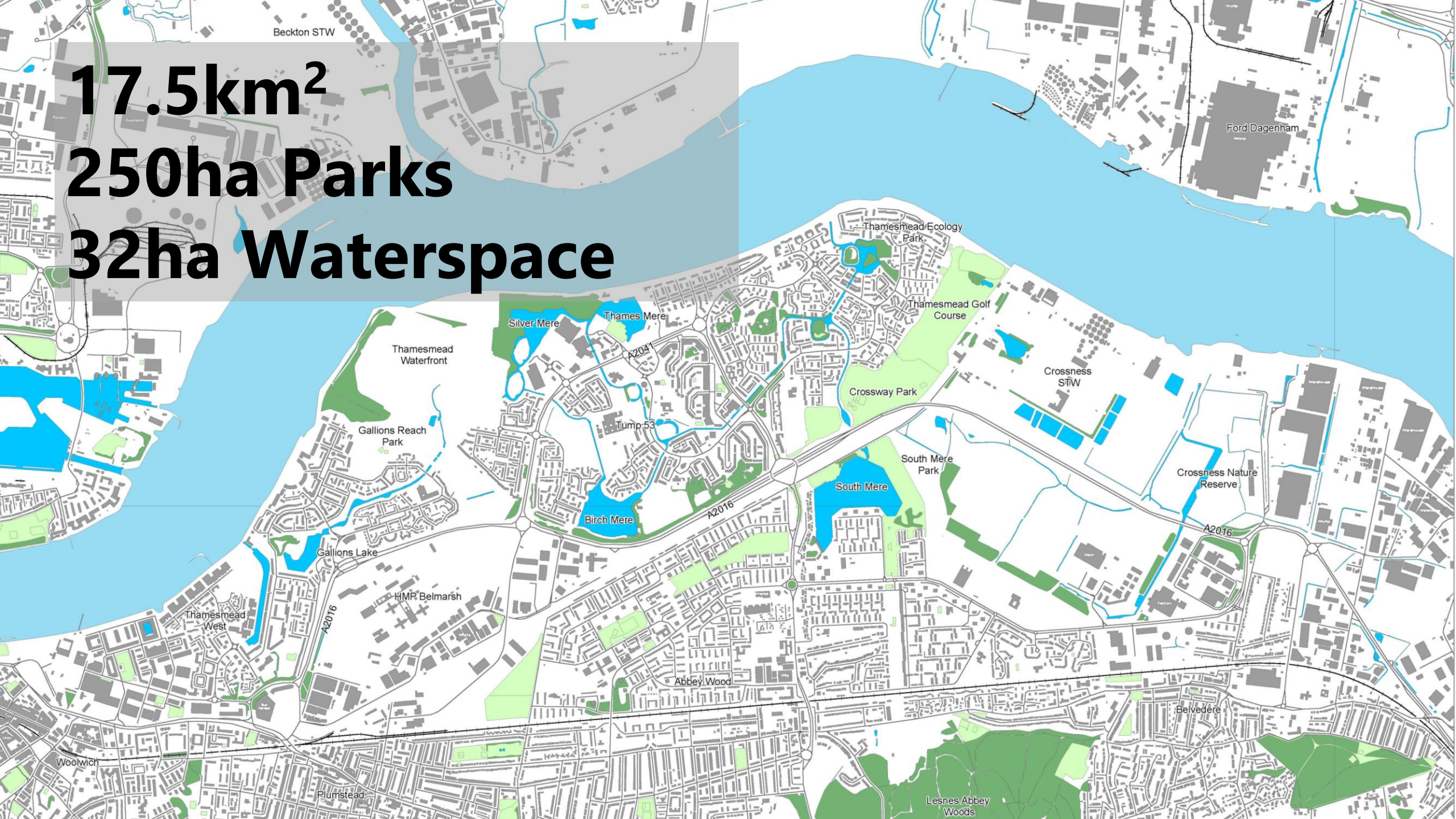
**Dr Phil Askew
30th June 2025**



17.5km²

250ha Parks

32ha Waterspace



Living in Landscape

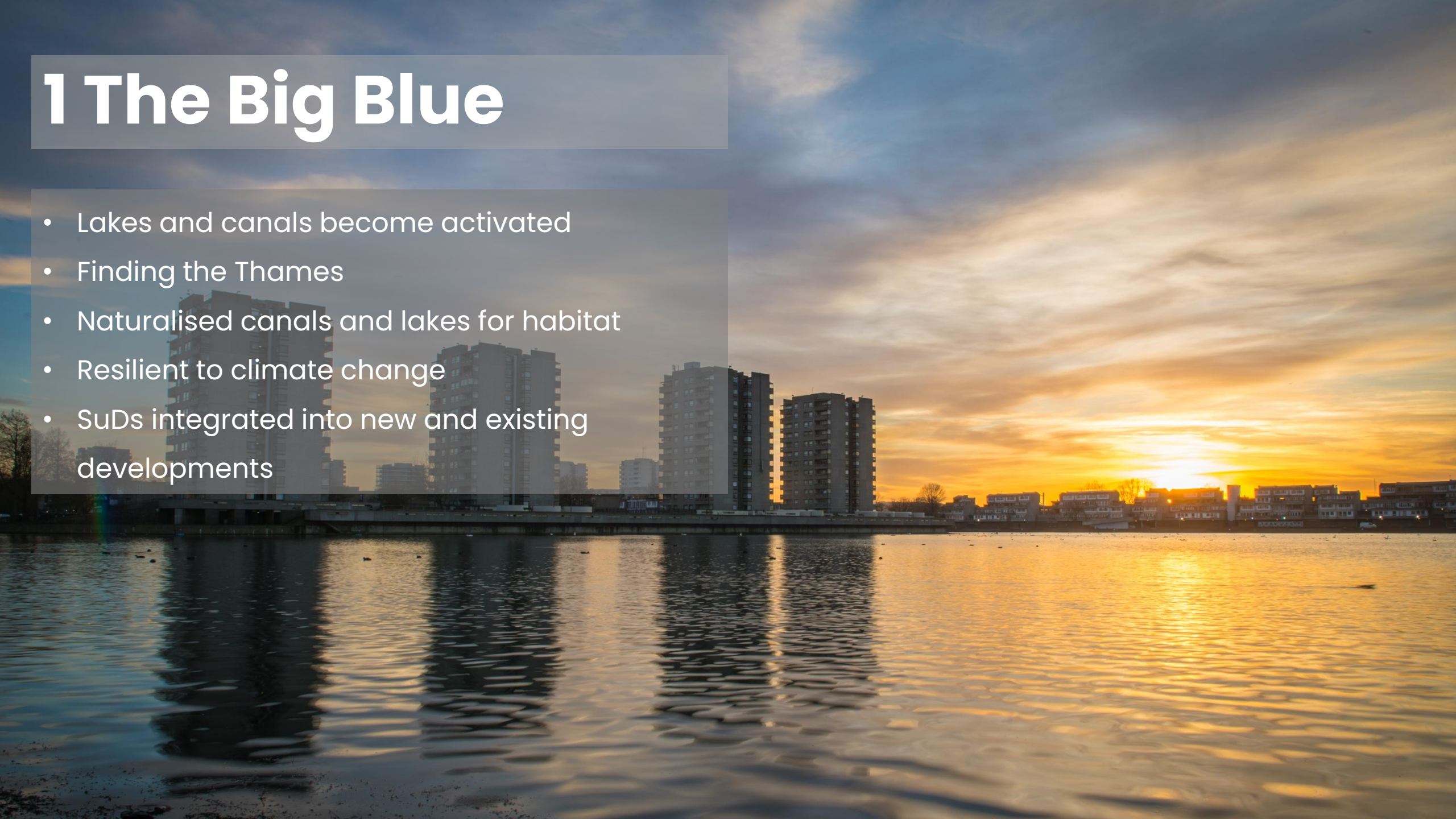
A Green & Blue Infrastructure Strategy for Thamesmead

- Long term
- Evidence and policy led
- Landscape as the uniting device
- Sustainable places focus
- Stewardship
- 5 Key themes:



1 The Big Blue

- Lakes and canals become activated
- Finding the Thames
- Naturalised canals and lakes for habitat
- Resilient to climate change
- SuDs integrated into new and existing developments



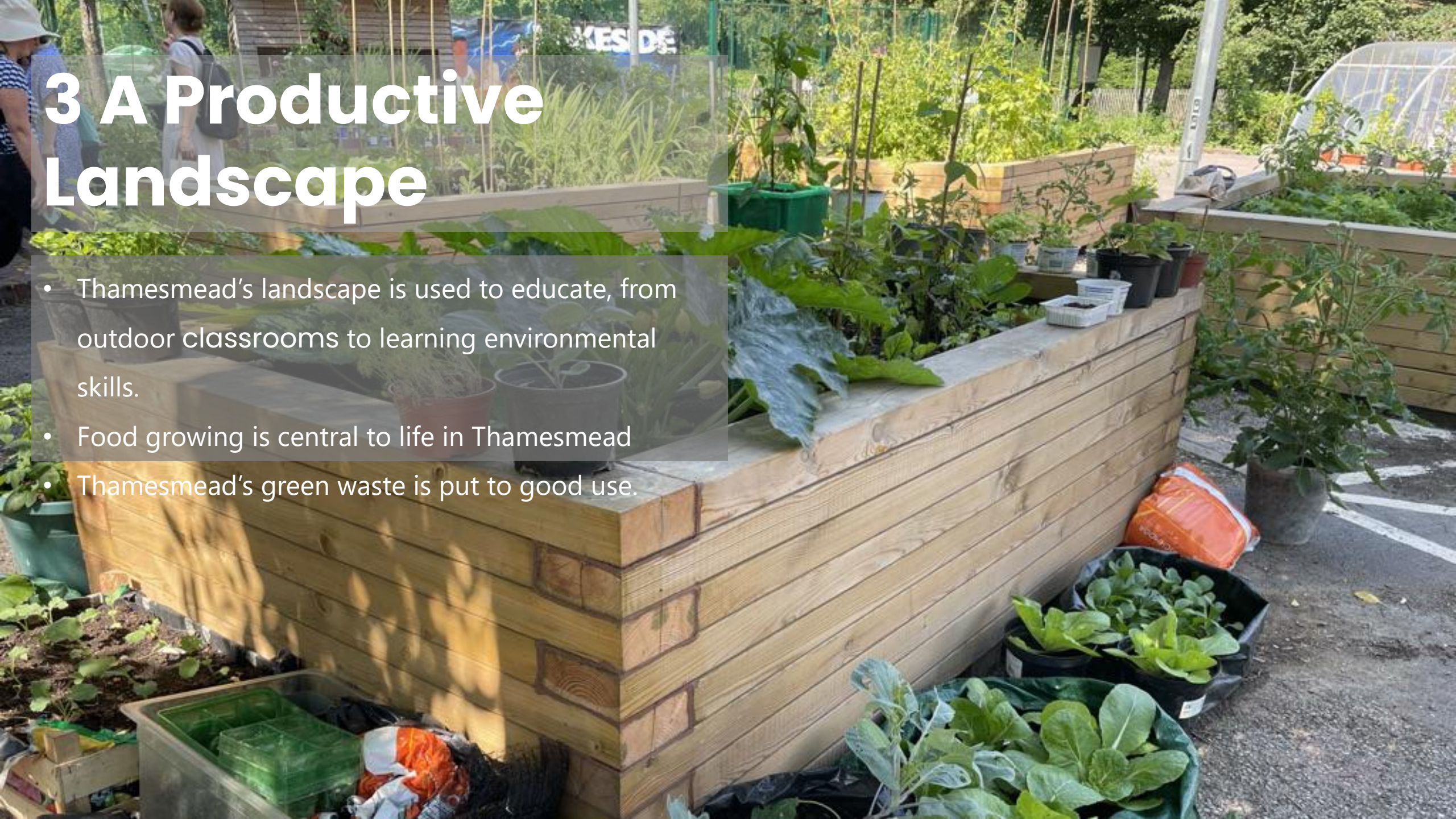
2 Wilder Thamesmead

- Biodiversity Action Plan
- Londons largest new urban forest
- Mown grassland replaced with wildflower meadows
- New homes will be created for bats, birds and bees
- Thamesmead's estates will go from grey to green



3 A Productive Landscape

- Thamesmead's landscape is used to educate, from outdoor classrooms to learning environmental skills.
- Food growing is central to life in Thamesmead
- Thamesmead's green waste is put to good use.



4 Active Thamesmead

- Thamesmead is known as a place for being active in nature
- The landscape is playable, creating a network that connects schools, nurseries and community centres.
- The lakes and canals are places for anglers, kayakers, summer lidos and wild swimming.



5 Connected Thamesmead

- Active travel, walking, cycling and public transport is prioritised across Thamesmead.
- Easy to get around and find your way
- Connecting places and activities
- A 6km cycleway and footpath will create a new artery into Thamesmead, making cycling to the shops easier.



Transforming the Grey



... into the Green



Human and Biodiverse spaces



Managing water intelligently



Southmere Lake

- Part of wider water system
- Adjacent to major development
- Clogged with silt
- Algal blooms



Southmere Lake

- 7000m³ silt relocated
- Reedbeds created



Southmere Lake

- Floating reedbeds clean water



Southmere Lake

- Greater biodiversity



Southmere Lake

- Access to water




Tiny Forest



Birchmere Lake Swimming



Our key achievements (2018-2023)

7 new play spaces in use	6 community gardens flourishing 	12,655 people welcomed to organised nature activities	19,282 muddy boots exploring Tump 53 nature reserve 
£10m invested in the public realm improvements in South Thamesmead	1,200 volunteer hours spent improving biodiversity	3,350 native wildflower seed packets shared with local people	30 nature forums held
5,100 trees planted with the help of volunteers	£2.5m invested in improvements at Southmere Lake 	33 projects supported by the Making Space for Nature community fund	
182 people swimming in Birchmere Lake 	14 local nature-based projects funded, to a total value of £24,114 [2022/23] 	26,000m ² of meadows created	
360 'wildlife and welly' walkers		20% increase in biodiversity in shared spaces across the Southmere and Parkview Estates	1,110m ² floating reed beds created in 5 canal areas, Birchmere Lake & Southmere Lake

Summing up

Why landscape led?

- Value
- Purpose
- Getting it right
- Legacy
- Expert client



Thank you!



phil.askew@peabody.org.uk

 Peabody