

# PLACESHAPERS

## Annual Conference

Wednesday 27th November, 2019  
The Studio, Cannon Street, Birmingham. B2 5EP.

## Delegate Pack

Kindly Sponsored by

Anthony Collins  
solicitors

Media Partner

Join the conversation  
Follow us @placeshapers  
#placeshapers2019



## Welcome!

We are delighted to welcome you to the PlaceShapers Annual Conference 2019.

In addition to our key-note speakers we have nine seminar sessions covering current key topics of the day. Please select and attend one morning and one afternoon session from the list featured overleaf. Detailed biographies of our speakers and a full delegate list of the day can be found on our website.

I would like to convey our sincere thanks to all our speakers for sharing their time and expertise so freely, as well as our board whose contributions ensure the aims of the network are fulfilled. We would also like to thank our sponsor Anthony Collins Solicitors for supporting the conference and our media partner 24 Housing.

If you would like to join the conversation follow us on twitter @placeshapers using the hashtag #placeshapers2019.

Feedback is very important to us and we would be grateful if you could take a few minutes to complete our survey at the end of the day.

Finally, please have an enjoyable and informative day.



**Sinéad Butters**  
Chair  
PlaceShapers

## Agenda

- 9.30am Arrival and Refreshments
- 10am Welcome  
Sinead Butters, Chair, PlaceShapers
- 10.05am Opening Plenary  
Sinéad Butters, Chair, PlaceShapers  
Lord Wei of Shoreditch  
Mary-Kathryn Rallings Adams, HACT
- 11.15am Comfort Break
- 11.45am Morning Seminar  
Please select your preferred seminar from the list overleaf
- 1pm Lunch (served on 3<sup>rd</sup> and 4<sup>th</sup> floor)
- 2pm Afternoon Seminar  
Please select your preferred seminar from the list overleaf
- 3.15pm Comfort Break
- 3.30pm Closing Plenary  
Alistair McIntosh, Housing Quality Network  
Sinéad Butters, Chair, PlaceShapers
- 4.30pm Close

	Room	Name
11.45 am		
<b>Seminar 1</b>	<b>Innovate</b>	<b>Culture for Excellence</b>
Chair		Sinead Butters, Chief Executive, Aspire Housing
Speaker		Jen Barfoot, Chief Executive (Retired), Homes in Sedgmoor
Speaker		Angela Lockwood, Group Chief Executive, North Star Housing Group
<b>Seminar 2</b>	<b>Connect</b>	<b>Great Places Commission on Regeneration</b>
Chair		Matthew Walker, Chief Executive, Leeds Federated HA
Speaker		Katie Teasdale, Head of Member Relations, National Housing Federation
Speaker		Kevin Rodgers, Group Chief Executive, Citizen
<b>Seminar 3</b>	<b>Escape</b>	<b>Regulation Update</b>
Chair		Allister Young, Chief Executive, Coastline Housing
Speaker		Fiona McGregor, Chief Executive, Regulator of Social Housing
<b>Seminar 4</b>	<b>Develop</b>	<b>Housing &amp; The Climate Emergency</b>
Chair		Frank Czarnowski, Chief Executive, West Kent HA
Speaker		Richard Lupo, Managing Director, SUSS
Speaker		Rosemary Coyne, Co-ordinator, SHAP
<b>Seminar 5</b>	<b>Bond</b>	<b>Communities in Control</b>
Chair		Cath Purdy, Chief Executive, South Lakes Housing
Speaker		Nic Bliss, Head of Policy, Cooperative Housing
Speaker		Catherine Harrington, Joint CEO, National CLT Network
1pm		
<b>LUNCH</b>		
2pm		
<b>Seminar 6</b>	<b>Develop</b>	<b>Talking to the Conservatives</b>
Chair		Sinead Butters, Chief Executive, Aspire Housing
Speaker		Nick Kilby, Chief Executive, Cratus Communications
<b>Seminar 7</b>	<b>Innovate</b>	<b>Innovation in Housing Services</b>
Chair		Claire Higgins, Cross Keys Housing
Speaker		Alan Keers, Chief Executive, Twenty11
Speaker		Prof. Ed Ferrari, Sheffield Hallam University
<b>Seminar 8</b>	<b>Escape</b>	<b>Governing Well – Knowing What Could Go Wrong and What to Do if It Does</b>
Chair		Matt Campion, Chief Executive, Shepherds Bush Housing Group
Speaker		Gemma Bell, Partner, Anthony Collins Solicitors
<b>Seminar 9</b>	<b>Bond</b>	<b>Homes for Cathy</b>
Chair		Charlie Norman, Group Chief Executive, MCSV
Speaker		David Bogle, Chair, Homes for Cathy
Speaker		Chris Hancock, Head of Best Practice, Crisis

## Key Note Speakers

### **Lord Wei of Shoreditch - Member, House of Lords UK**

Lord Wei served as the youngest male and only member of the House of Lords in the UK from a Chinese background. He started as a McKinsey & Company consultant before shifting into venture capital, social enterprise, and policy development.

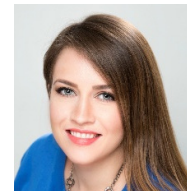


Lord Wei is the founding and current partner of the Shaftesbury Partnership, a member of the founding team of Teach First and former adviser at Absolute Return For Kids. A member of the advisory board of Future Planet Capital, the world's first global platform to invest at scale in innovation emerging from leading universities to profitably address a multitude of global challenges.

A former fellow of the Young Foundation, and a World Economic Forum Young Global Leader, Lord Wei is a member of the House of Lords and various Committees. He sits on multiple boards as chair and advisor across different industries.

### **Mary Kathryn Rallings Adams, Deputy Chief Executive, HACT**

Mary-Kathryn joined HACT in 2013. In her role as Deputy Chief Executive at HACT, Mary-Kathryn manages a range of research projects, working with clients both within and beyond the housing sector.



Prior to joining HACT, she completed her doctorate in social anthropology, exploring the intersection of urban regeneration, conflict and social policy in Northern Ireland. She has authored peer-reviewed journal articles, as well as various research reports for HACT and other think tanks, and regularly contributes to working groups, seminars and conferences committed to interdisciplinary research in academia as well as in the third sector.

## Seminar 1: Culture for Excellence

### **Jen Barfoot, Chief Executive (Retired), Homes in Sedgemoor**



Jen worked in the social housing sector for almost 40 years, before retiring earlier in 2019.

She has worked in every part of the social housing sector, from Tenant Management Organisations, to Local Authorities and both traditional and LSVT Housing Associations, having led three stock transfers. Her roles have ranged from Repairs Clerk to Chief Executive, and everything in between.

Jen's last role was as Chief Executive of Homes in Sedgemoor, an ALMO in Somerset. Here, she worked with colleagues and Board to transform the culture of the organisation and create a multi award winning ALMO, culminating in being named the 2019 UK Landlord of the Year by 24Housing.

Her passions are people and excellent service design and delivery. She remains a member of the Governing Board of CIH and is loving life!

### **Angela Lockwood, Group Chief Executive, North Star**



Angela has been Chief Executive of North Star for ten years. She is a Fellow of the Chartered Institute of Housing and holds an MBA from Newcastle Business School and is a Board member at Joseph Rowntree Housing Trust.

North Star operates in the North East and provides both general needs and supported housing. It works in many highly deprived communities and delivers extensive community support and services. North Star plans to build 500 homes over the next five years. North Star was the first in the sector to achieve Investors in People Platinum and in 2018 was voted the number one landlord in the 24 housing magazine.

## Seminar 2: Great Places Commission on Regeneratio

### **Katie Teasdale - Head of Member Relations at the National Housing Federation**



Katie leads the Federation's work to support and engage housing associations. Previously, Katie was the Federation's External Affairs Manager for the North West and Director of Policy and Strategic Relationships at the Greater Birmingham Chamber of Commerce. She founded The Good Food Bag, a social enterprise based in Manchester, to promote food security for families on low incomes.

**Kevin Rodgers, Group Chief Executive, Citizen**

Kevin was appointed Chief Executive at Citizen in May 2015. Before that he was the organisation's Deputy Chief Executive and Group Finance Director having previously worked as a consultant at PricewaterhouseCoopers.



WM Housing and its subsidiaries amalgamated on 1 September 2019 to become Citizen. Citizen owns and manages around 30,000 rented homes across the West Midlands region through. Citizen has an annual turnover of £150m and a substantial programme for the development of new homes. In September 2016 Kevin was elected as the Chair of the West Midlands Housing Association Partnership which was created to provide a single voice for housing associations to engage and support the West Midlands Combined Authority ("WMCA") in delivering on an ambitious change programme for housing that will be necessary for it to achieve its social and economic aims. Kevin is actively involved with the work of the Local Enterprise Partnerships in Greater Birmingham & Solihull and Coventry & Warwickshire.

**Seminar 3: Regulation Update**

**Fiona MacGregor, Chief Executive, Regulator of Social Housing**

Fiona MacGregor was appointed the Regulator of Social Housing's (RSH) Chief Executive on 1 October 2018. RSH was previously part of the Homes and Communities Agency (HCA), of which Fiona was the Executive Director of Regulation since November 2015.



Fiona has worked at the HCA since it launched in 2008, before which she was Deputy Director of Investment at the Housing Corporation, and Head of Development at London and Quadrant, a large registered provider.

**Seminar 4: Housing and the Climate Emergency**

**Richard Lupo, Managing Director, MIEMA, CEnv.**

Richard is a Chartered Environmentalist and Full Member of the Institute of Environmental Management and Assessment (IEMA). He has had a life-long interest in sustainability issues. He has carried out over 50 full sustainability assessments of social landlords using the SHIFT standard. He is very proud that it is leading to significant environmental and value for money improvements.



**Rosemary Coyne, Co-ordinator, SHAP**

Rosemary has over twenty years experience working in the field of environmental sustainability, from climate change adaptation and mitigation to advising and managing European projects. She has a wealth of knowledge and expertise in sustainable design and construction, climate change adaptation and mitigation, housing retrofit and energy management, environmental impact assessment/mitigation, urban regeneration and transition, low carbon technologies and innovation.



### Seminar 5: Communities in Control

#### **Nic Bliss, Head of Policy for the Confederation of Co-operative Housing,**

Nic Bliss is the Head of Policy for the Confederation of Co-operative Housing, one of the national organisations working with Government to deliver the Community Led Homes programme. A member/tenant of a Birmingham housing co-op, Nic has extensive experience of working to develop community led housing in England and Wales and working on tenant and community participation initiatives with community groups, housing associations and local authorities. Nic also produced the CCH's NHF endorsed "New Co-operative and Community Led Homes" guide.



#### **Samantha Jones, Head of Community Led Homes, Community Land Trust Network.**

Samantha joined the CLT Network in 2018. She heads up the Community Led Homes Programme, which is run jointly with partner organisations: Confederation of Co-operative Housing, Locality, and UK Cohousing. Community Led Homes provides funding, helps grow skills and resources for the sector, and raises awareness to get more people involved. Samantha also leads on initiatives to support the development of community land trusts, and to help make the organisation sustainable.

Samantha has previously worked in programme management, regeneration strategy, and development projects for East Suffolk Councils, Norfolk Rural Community Council, East of England Development Agency, and English Heritage.



### Seminar 6: Talking to the Conservatives

#### **Nick Kilby, Cratus Communications**

Nick is CEO and co-founder of Cratus Communications, whose ethos and approach are borne out of the passion and focus he exemplifies. He thrives on creating things that matter to people, whether it be communities, buildings or theatre productions. In 2006 Nick decided to follow his political and community interests and was elected councillor for his local London borough where he put his experience to good use. He went on to work for an established public affairs firm and in 2009 founded Cratus Communications.



As an elected member, Nick came to realise that the default stand-off between the community on one side and developers on the other need not be so. His approach successfully brought both "sides" together to find the best outcome for all. This hands-on experience in community engagement has given Nick a unique insight into how developers and residents can work together to benefit the local area. This is his guiding approach since founding Cratus, and has proven successful on a diverse range of projects from regeneration schemes in London such as Haringey Heartlands to work on heritage assets such as Cherkley Court.



### Seminar 7: Innovation in Housing Services

#### **Alan Keers, Chief Executive, Twenty11, Deputy Chief Executive, Red Kite Housing**

Prior to joining Red Kite, Alan was a qualified surveyor, engineer and property consultant. Alan joined Red Kite in 2011 as Director of Property and Development, before becoming the Director of Operations and is now Deputy Group Chief Executive of Red Kite and Chief Executive of Twenty11. In his role, Alan leads the operational side of the business that covers development, business, commercial, property and repairs, community (housing and estates) and relationships (customers and income). Alan's teams are focussed on delivering great services to customers and he also looks after branding, communications and driving innovation and creativity.



As well as being chartered in three disciplines, his extensive experience in over 30 years in the sector includes delivering partnering contracts, in-house services, developing apprentice schemes, providing technical training and advice for an international disaster agency as well as speaking at both national conferences and expert seminars for some of the industry's more recognisable bodies. Alan previously owned a chartered consultancy practice but found the opportunity and challenges of both Red Kite and latterly Twenty11 something that he could not pass up.

#### **Professor Ed Ferrari, Sheffield Hallam University.**

Professor Ed Ferrari is Director of the Centre for Regional Economic and Social Research (CRESR) at Sheffield Hallam University. He has over 20 years' experience in the analysis of housing markets, social rented housing, strategic planning and the use of quantitative datasets for policy research. Ed is a Managing Editor of the leading international journal *Housing Studies* and is a past Chair of the Housing Studies Association, the learned society representing the interests of housing scholars.

### Seminar 8: Governance

#### **Gemma Bell, Partner, Anthony Collins Solicitors**

Gemma leads Anthony Collins renowned housing corporate services team, delivering a wide range of advice on regulatory and charity law issues, together with large and innovative corporate projects. Gemma is a "go to" person for governance advice in the sector – for example, she was a contributor to the National Housing Federation's latest version of the Model Rules, which is the most widely used constitutional document in the social housing sector. Gemma specialises in advising housing associations on major corporate projects, including mergers, group consolidations, joint ventures, demergers and stock transfers.



## Seminar 9: Homes for Cathy

### David Bogle, Chief Executive, Hightown Housing Association

David has been Chief Executive at Hightown for over 20 years. He previously worked for Anchor HA and three London local authorities. David is heavily involved with the Homes for Cathy group of 85 housing associations campaigning for more homes and support for homeless people. The Homes for Cathy Group has worked with Crisis to develop nine Commitments, which challenge housing associations to review and improve their contribution to ending homelessness.



### Chris Hancock, Head of Best Practice, Crisis

Chris is responsible for Best Practice across Crisis' 11 centres in England, Scotland and Wales where last year we worked with over 10,000 homeless people. He is also responsible for Crisis' work supporting other organisations to end homelessness.



Most recently he has been working on supporting the Liverpool City Region and Torbay to adopt a Housing First model, supporting councils to successfully implement the Homeless Reduction Act and co-produced a set of 9 commitments with the Homes for Cathy Group of Housing Associations to show Housing Associations can help end homelessness.

## Closing Plenary

### Alistair McIntosh, Chief Executive, Housing Quality Network

Alistair McIntosh is one of the social housing sector's most respected and best known personalities.

As founder and chief executive of HQN, he is regarded as one of the foremost advisers on governance and regulation, specialising in VfM and stress testing. His hands on approach sees Alistair leading on all HQN's in-depth assessment mock exercises and support work, designing and running the popular Iron Grip sessions and chairing/speaking at conferences and events.



Career highlights include: Setting up and running the National Federation of ALMOs, leading the popular consultation on the regulatory standards for housing and developing an approach to VfM that won praise from the housing minister.

A regular contributor to the housing press, Alistair's columns are known for their humorous, pointed and painfully accurate assessment of the state of social housing

Since its inception, HQN has built up a membership of more than 1,000 housing associations, local authorities and ALMOs across its networks.

## Delegate List

Organisation	First Name	Last Name	Job Title
24 Housing	Mark	Lawrence	Editor
Accord	Sara	Woodall	Executive Director of Homes & Communities
Alliance Homes Group	Louise	Swain	Chief Executive Officer
Anthony Collins Solicitors	Rosemary	Major	Events Executive
Anthony Collins Solicitors	Gemma	Bell	Partner
Ark Consultancy	Paul	O'Driscoll	Business Development Consultant
Aspire Housing	Chloe	Challinor	Marketing Manager - Aspire Housing
Aspire Housing	Charlotte	Davies	Executive Assistant to Group Chief Executive
Aspire Housing	Jane	Strange	Interim Head of Governance
Aspire Housing	Sinead	Butters	Chief Executive
B3Living	Claire	Howe	Executive Director (Corporate Services)
BCHA	Martin	Hancock	Chief Executive
BCHA	Nicola	Greenfield	Head of Health, Wellbeing and Tenancy Sustainment
Black Country Housing Group	Abigail	Robson	Chair
Bolton at Home	Tina	Cunliffe	Director of Corporate Services
Broadacres Housing Association	Gail	Teasdale	Chief Executive
Broadland Group	Michael	Newey	Chief Executive
Broadland Housing Association	Paula	Strachan	Corporate Communications Manager
Broadland Housing Group	Catherine	Little	Executive Housing Director
Bromford	Carl	Sautereau	Director of Customer Experience
Bron Afon Community Housing	Alan	Brunt	Chief Executive
Bron Afon Community Housing	Unji	Mathur	Director of Transformation
Brunelcare	Oona	Goldsworthy	Chief Executive
Chartered Institute of Housing	Asif	Mahmood	
Coastline Housing	Chris	Weston	Director of Development & Commercial Services

Coastline Housing	Julian	Rowe	Communications Advisor
Coastline Housing	Paul	Holding	Income Theme Lead
Coastline Housing	Julian	Rowe	Communications Advisor
Coastline Housing	Allister	Young	Chief Executive
Community Gateway Association	Rob	Wakefield	Chief Executive
Community Land Trust Network	Samantha	Jones	Head of Community Led Homes Programme
Connexus	Christine	Duggan	Director of Housing and Wellbeing
Cooperative Housing	Nic	Bliss	Head of Policy
Cornerstone	Tom	Woodman	Chief Executive (designate)
Cratus Communications	Nick	Kilby	Chief Executive
Crisis	Chris	Hancock	Director of Campaigns
Cross Key Homes	Katie	Taylor	Marketing and Communications Manager
Cross Key Homes	Claire	Higgins	Chief Executive
Croydon Churches Housing Association (CCHA)	Tracy	Cullen	Chief Executive
Eden Housing Association	Kristina	Thrush	Director of Finance and Corporate Resources
emh homes	Joanna	Connolly	Housing Manager
emh homes	Sarah	Gee	ASB Manager
EMH Housing Group	Christine	Ashton	Executive Director - Housing
Futures Housing Group	Suki	Jandu	Group Director, Customer Experience and Assets
Futures Housing Group	Sarah	Wyke	Head of Neighbourhoods
GCHA	Joe	Scullion	Chief Executive
Gentoo Group	Susie	Thompson	Director (Neighbourhoods)
Grand Union Housing Group	Mark	Sibson	Communications Manager
Grand Union Housing Group	Phil	Hardy	Executive Director of Operations
Greatwell Homes	Karen	Willoughby	Procurement Manager
Greenfields Community Housing	Diane	Foley	Head of Neighbourhoods
Greenfields Community Housing	David	White	Neighbourhood Manager
HACT	Mary-Kathryn	Adams	Deputy Chief Executive

Halton Housing	Liz	Haworth	Group Chief Executive
Havebury Housing Partnership	Andrew	Smith	Chief Executive
Havebury Housing Partnership	James	Greener	Performance Manager/ PlaceShapers Data Support
High Town Housing Association	Andrew	Royall	Director of Development
Hightown Housing Association	Natalie	Sturrock	Head of Tenant Services
Homes England	Harriet	Hughes	Policy Analyst
Homes for Cathy	David	Bogle	Chair of Homes for Cathy
Homes in Sedgemoor	Jen	Barfoot	Chief Executive (Retired)
Honeycomb Group	Tim	Sheail	Director of Housing Services
Honeycomb Group	Fred	Wright	Board Member
HouseMark	Emily	Cullingham	Communications Manager
Housing Plus Group	Sarah	Boden	Chief Executive
HQ Network	Alistair	McIntosh	Chief Executive
Incommunities	Stacey	Dove	Executive Support Officer
Irwell Valley Homes	Sasha	Deepwell	Chief Executive
Islington & Shoreditch Housing Association	Judith	Leigh	Head of People and Organisational Development
Karbon Homes	Lucy	Dixon	Public Affairs and Stakeholder Engagement Manager
Karbon Homes	Phillip	Curran	Business Manager
Leeds and Yorkshire Housing Association	Michael	Gaskell	Chair
Leeds and Yorkshire Housing Association	Mark	Pearson	Chief Executive Officer
Leeds Federated Housing Association	Matthew	Walker	Chief Executive
Leeds Federated Housing Association	Matthew	Walker	Chief Executive
Livin Housing	Colin	Steel	Chief Executive
Livin Housing	Alan	Boddy	Executive Director of Operations
Livin Housing	Adele	Barnett	Chair of Housing and Assets
Magenta Living	Brian	Simpson	Chief Executive
Magenta Living	Jayne	Winders	Executive Director

Manningham Housing Association	Lee	Bloomfield	Chief Executive
Mayor of Shoreditch	Lord	Wei	Mayor of Shoreditch
MEL Research	Adam	Knight-Markiegi	Research Director
Moss Care St Vincents	Charlotte	Norman	Group Chief Executive
Moss Care St Vincents	Charlie	Norman	Group Chief Executive
Mount Green Housing Association	Kim	Derry	PR, Communications and Events Manager
National Housing Federation	Katie	Teasdale	Head of Member Relations
National Housing Federation	Simon	Nunn	Executive Director - Member Services
Newlon Housing Trust	Surjit	Dhande	Group Director of Finance and Resources
North Devon Homes	Marc	Rostock	Director of Neighbourhood
North Star Housing Group	Adam	Clark	Executive Director of Housing
North Star Housing Group	Angela	Lockwood	Group Chief Executive
Northern Consortium	Kate	Maughan	
Octavia Group	Sandra	Skeete	Chief Executive
One Housing	Chyrel	Brown	Chief Operating Officer
One Housing Group	Richard	Hill	Chief Executive
One Manchester	Alan	Leicester	Head of Place
Orchard Information Systems	Lisa	Gascoyne	Housing Product Manager
Origin Housing	Fola	Akinrowo	Data Services Manager
PlaceShapers	Charlotte	Kay	Business Support Officer
PlaceShapers	Paul	Smith	Director
Poplar HARCA	Babu	Bhattacharjee	Director of Communities and Neighbourhoods
Prima Group	John	Ghader	Chief Executive
Progress Housing Group	Sarah	Barnes	Group Data Analysis Manager
Railway Housing Association	Anne	Rowlands	Chief Executive
Raven Housing Trust	Jonathan	Higgs	CEO
Regenda Homes	Steph	Harrison	Executive Director: Customer Services
Regenda Homes	Bill	Lovat	Regional Director

Regulator of Social Housing	Fiona	McGregor	Chief Executive
Saffron Housing Trust	James	Francis	Chief Executive Officer
Shepherds Bush Housing Group	Joanna	Charlton	Head of Communications
SHAP	Rosemary	Coyne	Co-ordinator
Sheffield Hallam University	Prof Ed	Ferrari	Professor
Shepherds Bush Housing Group	Matt	Campion	Chief Executive
SOHA	Lee	Hayward	Assistant Director Customer Services
South Lakes Housing	Cath	Purdy	Chief Executive
Stafford and Rural Homes	Harpreet	Rayet	Assistant Director of Development
SUSS	Richard	Lupo	Managing Director
Swan Housing Association	Juliette	Bartlett	Project Director - Experience Excellence
SYHA Ltd	Tony	Stacey	Chief Executive
Teign Housing	Andy	Jones	Chair of Board
Teign Housing	Helen	Hilditch	Head of Finance
The Havebury Housing Partnership	Anita	Jones	Director of Operations
Trafford Housing Trust	Larry	Gold	Chief Executive
Trent & Dove Housing	Catherine	Slater	Head of Governance & Compliance
Trident Group	Dr Christopher	Derby	Executive Lead - People & Resources
Twenty 11	Sarah	Mei Ying North	Twenty11 Project Lead
Twenty11	Alan	Keers	Chief Executive
Two Rivers Housing	Garry	King	Chief Executive
Two Rivers Housing	Yvonne	Leishman	Group Board Chair
United Communities	Anna	Klimczak	Interim Chief Exec
United Communities	Sally	Gilbert	Development and Investment Director
VIVID	Eva	Lambert-Smith	Head of Communications
VIVID	Sarah	Phillips	Head of Corporate Planning, Research & Business Improvement
Wandle	Kirsty	Minnis	PR, Communications and Innovation Manager

Wandle Housing Association	Iain	Turner	Policy and Data Governance Lead
Watford Community Housing	Paul	Richmond	Director of Finance & Resources
West Kent Housing Association	Frank	Czarnowski	Chief Executive
West Kent Housing Association	Tracy	Allison	Chief Executive
whg	Gary	Fulford	Group Chief Executive
whg	John	Bedford	Land and Innovation Lead
WM Housing Group	Kevin	Rodgers	Group Chief Executive
Worthing Homes	Suzanne	Newman	Marketing and PR Officer
Wythenshawe Community Housing Group	Sarah	Klueter	Assistant Director - Community Investment
Wythenshawe Community Housing Group	Paula	Marshall	Assistant Director of Housing
	Jamie	Ratcliff	